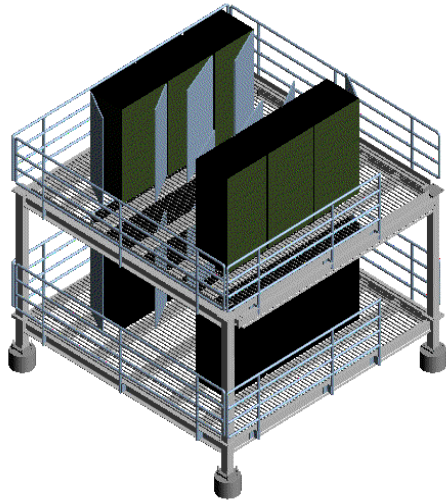




# SP1616-ST

## Custom Stackable Cabinet Platform

## Specification Sheet



### Materials

**Platform:** Base Platform - W8X15 I-Beam with 1"X3/16" (19W4) Bar Grating; Legs - 6"X6"X1/2" Square Tubing connected with 1"X10-1/2" Square Steel Plate; Handrails - 1-1/2" Pipe attached to platform with receivers welded on platform; All steel is ASTM A36 unless otherwise specified. Specify Ladder or Stairs; Hot-Dip Galvanized after fabrication;

**Hardware:** Base Platform - 5/8" - 11 X 1-1/2" A325 Bolts, nuts, washers; Legs - 1" - 8 X 3" HH Bolts with heavy duty nuts. Grating - Grating Clips and 1-1/2" Self Tapping Screws; Hot-Dip Galvanized.

**Accessories:** Ladder with Safety Cage, Ships Ladder with Handrails, Stairs with handrails and/or landing, telco rack, cable hangers

**SP1616-ST - Stackable Cabinet Platform** - Designed to support multiple cabinets in minimal space. Equipment can be placed along the outsides, facing each other, with work area between. Engineered to stack three platforms high.

**Frame Weight:** 5655 Lbs.

### **Installation:**

- A. Verify that receiving area is smooth and clean to extent needed to receive materials.
- B. Review approved final drawings to determine the location of Platform.
- C. Accurately locate Base Platform in location specified as per approved shop drawings or as required by site conditions
- D. Bolt Legs to Pile with Hardware specified by Engineer performing ground/soil calculations on site conditions.
- E. Bolt Platform perimeter I-Beams to legs as indicated in above drawing with 5/8" - 11 X 2" A325 Bolts, washers and nuts, provided.
- F. Bolt Platform cross member I-Beams together as indicated in above drawing with 5/8" - 11 X 2" A325 Bolts, washers and nuts, provided.
- G. Place Grating on I-Beams as indicated in above drawing and attach with grating clips and self-tapping screws, provided.
- H. Insert Handrails into receivers welded to platform.
- I. For second & third story, bolt legs together as indicated in above drawing with 1" - 8 X 3" HH Bolts with heavy duty nuts.
- J. Continue bolting second and third story platforms as described in "E, F, G & H" above.
- K. For Ladder or Stairs, see separate assembly instructions.
- L. Remove any unused materials and packaging from job site.

This print/image and design and detail shown hereon is the property of Advanced Support Products, Inc. This print is furnished with the understanding that it is not to be reproduced without permission, and must be returned upon demand. All rights of design and invention are reserved by Advanced Support Products.

Patents #5816554 ; #6229497; #6427965; #6448497; #6578827 © 2010